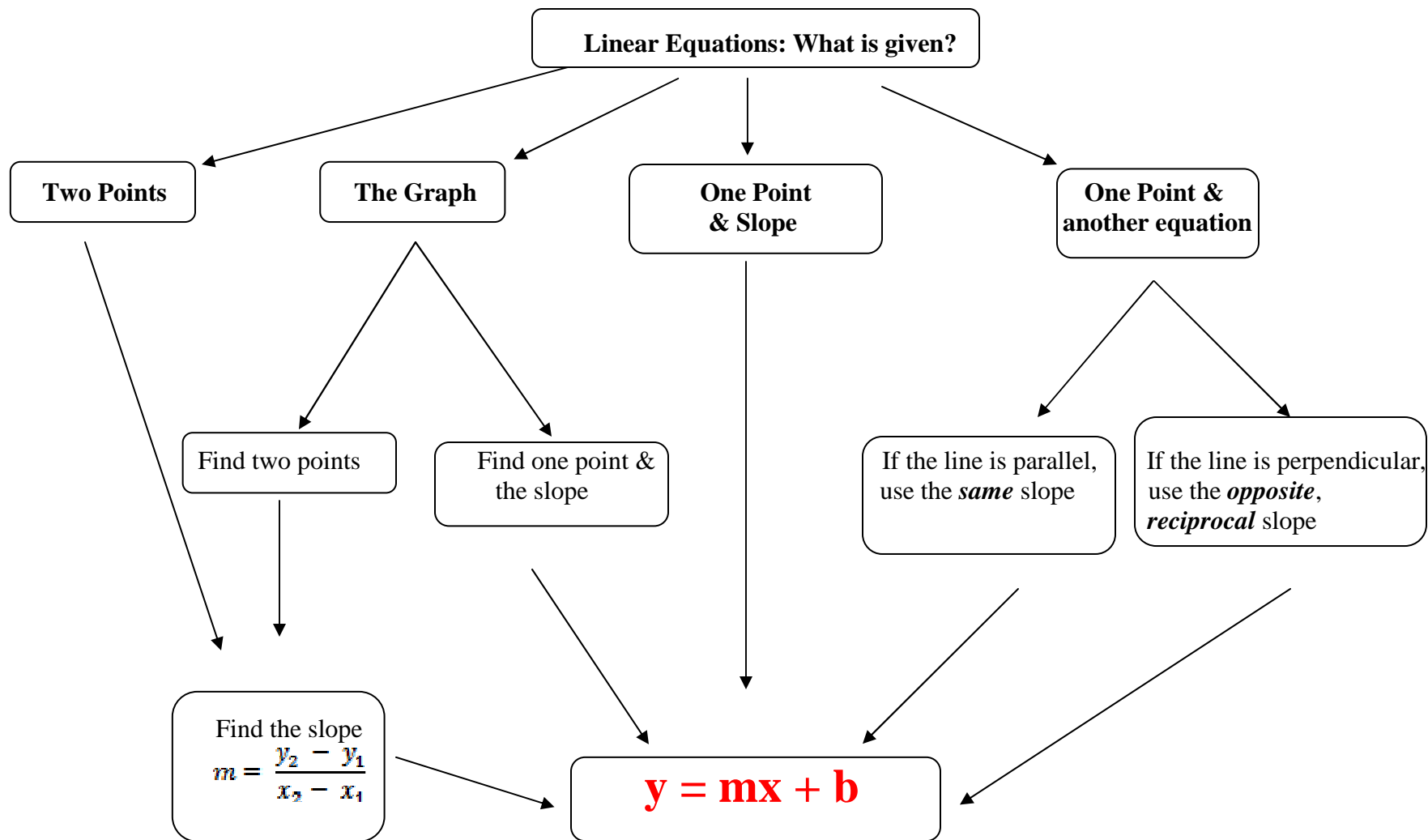


Special case:

Special case:

By Tenesha Young
NC TEACH 2010-2011



Special case: If "m" is undefined (no slope), the line is vertical. x = any #, same number for y. (i.e., (-2, 4), (0,4), (5, 4)) .
Equation is $x = 4$.

By Tenesha Young
NC TEACH 2010-2011

Special case: If "m" is zero, the line is horizontal. y=any number, same number for x. (i.e., (-6,3), (-6, 7), (-6,5)).
Equation is $x = -6$.